

331.215

... .. (.)

-

(1884-1948). (XX) (1862-1945), (1857-1929),

- 1)
- 2)
- 3)
- 4)
- 5)
- 6)
- 7)

[1].

« » 1918 .

1992 . 66 29 1992 1995 .

1917 1991 .

(1917)

75

(

).

1994

[2],

84

1982-

BB

— 0.4%.

— 0,9%;

— 1,8%;

2,4%:

20

),

[3].

(

[3]

, Transparency International

2007-2008

Transparency International

(,)

1995

2007

118-
: 2006-

179

99-
().

163.

-
-
-

).

, 2006

0,774

0,923.

2007	2006	2005	2007 (2005 .)	1999 (1997 .)	2007	2006	1999
64	67	67	68,7	68	0,804	0,794	0,763
67	65	62	65	66,6	0,802	0,797	0,747
73	79	80	65,9	67,6	0,794	0,774	0,740
76	77	78	67,7	68,8	0,788	0,774	0,721

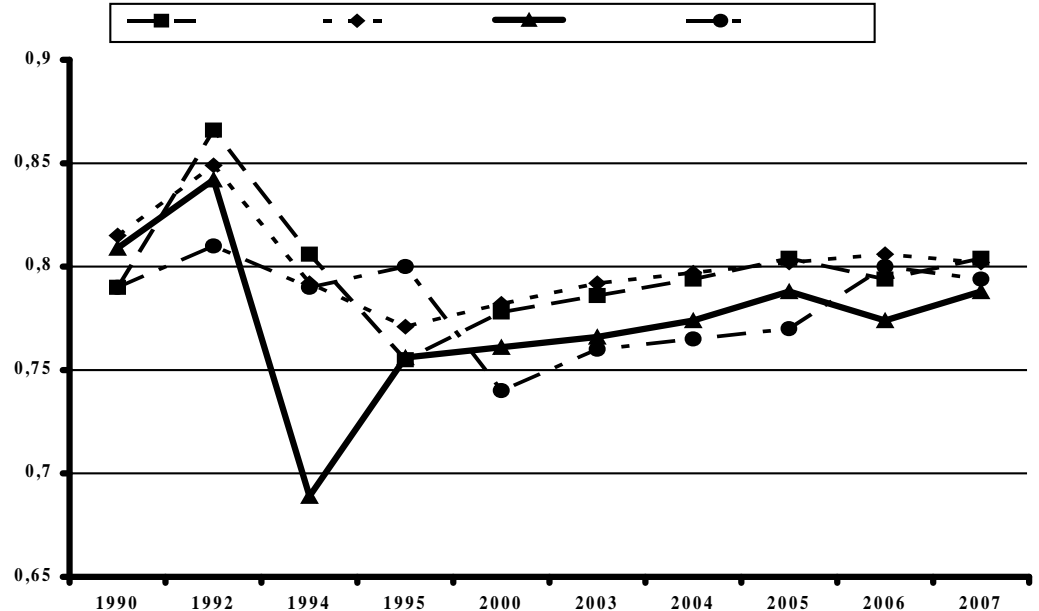
(65-),
(67-).

2005

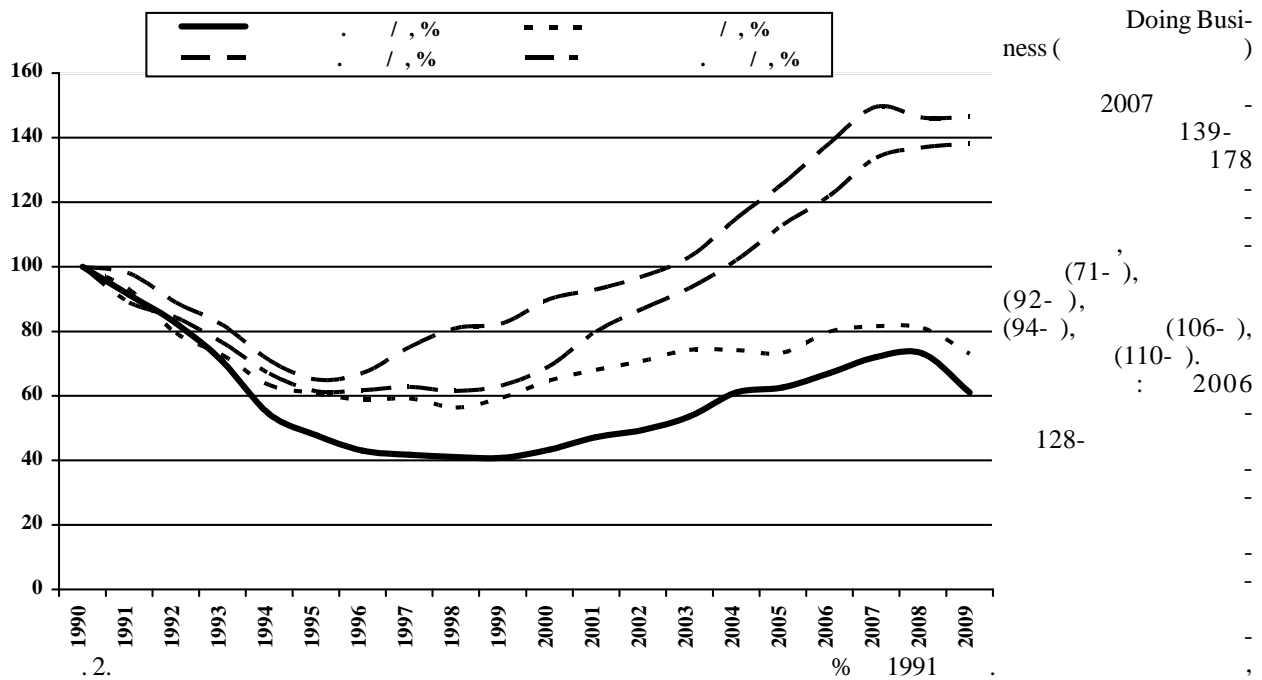
0,766).

1990-2007

% 1991



1990-2007



212

1996-2007: 2006

100

45, — 34 ; — 32. — 40. [4].

• — 40. : — 67, — 77, — 74, — 73;

• — 34 ; — 40. : — 83, — 76, — 73;

• — 35. : — 42, — 57, — 61 ;

• — 34. : — 38, — 80, — 66

1. : []/ —2- .

2. Keefer, Philip and Shirley, Mary M. From the Ivory Tower to the Corridors of Power. / Keefer, Philip and Shirley, Mary M. — Making Institutions Matter for Development Policy, Mimeo, World Bank. 1998.

3. // — 2007. — 42 (671). — 11-18

4. : —

1996-2006 (Governance Matters 2007: Worldwide Governance Indicators 1996-2006) /